

LUXURY
Yacht
GROUP
PRESENTS



SOLEMATES

Sail into Exclusivity – Be Among the First to Charter!



118' LENGTH



1.98 m DRAFT



8 GUESTS



4 CABINS



8 CREW

CHARTER LOCATIONS

Currently booking fall/winter charters in the

- BAHAMAS
- CARIBBEAN

SPECIFICATIONS

BUILDER: Mulder Shipyard

BUILT: 2022

NAVAL DESIGN: Van Oossanen Naval Architects

HULL: Fast Displacement, Aluminum

LENGTH: 118 ft (36 m)

BEAM: 26 ft 3 in (8 m)

DRAFT: 6 ft 7 in (1.98 m) (light ship)

CRUISING SPEED: 12.5 knots (max 18 knots)

RANGE: 2,200 nautical miles

STABILIZERS: Zero Speed Fins & Gyro Stabilizers

GROSS TONS: 296 T

ACCOMMODATIONS

GUESTS: 8 Guests (sleeping)

CABINS: 4

BEDS: 1 master with king,
2 fixed doubles, 1 convertible cabin

FEATURES

Sleek, contemporary design throughout

Large circular jacuzzi with bar seating on sun deck with panoramic views

Bright, open entertainment spaces

Spacious full-beam master suite with signature skylights and oversized ensuite bathroom

Watersports: 2 waverunners, 2 Seabobs, waterskis, paddleboards, wakeboard, fishing & diving

CHARTER RATE

\$160,000 per week plus expenses

CONTACT

Rupert Connor

rc@luxyachts.com

+1 954 205 0070

luxyachts.com

LUXURY *Yacht* GROUP

The 118' motor yacht Solemates, delivered by Mulder Shipyard in 2022. Built on a fast displacement aluminium hull with a 26' 3" beam, she offers a sleek silhouette and spacious accommodations across two decks.

Exterior

Her elegant lines and straight bow enhance both performance and interior volume. The expansive "two-and-a-half deck" design maximizes exterior space for relaxation and entertaining. Guests can enjoy the spacious main aft deck and luxurious sun deck with a spa pool, bar, and retractable TV. The beach club, garage with Williams 625 tender, and large swim platform add convenience for water activities.

Interior

Solemates's interior is a blend of oak and teak, complemented by vibrant artwork, including iconic Andy Warhol prints. The open-plan main deck integrates living and dining areas, complete with a sit-at bar and balcony for alfresco dining. Advanced tech, including iPad-controlled entertainment and ambient settings, ensures modern luxury throughout.

Accommodation

Accommodating 8 guests in 4 luxurious cabins, including a main-deck owner's suite, Solemates is designed for comfort and privacy. The flexible guest cabins and well-appointed crew quarters ensure the highest standards of service.

Performance

Powered by twin Caterpillar C18 engines, Solemates cruises comfortably at 12 knots, reaching a top speed of 18 knots. Her impressive range and robust design allow for extended voyages and unrestricted navigation, meeting the highest safety standards.



LUXURY
Yacht
GROUP



LUXURY
Yacht
GROUP



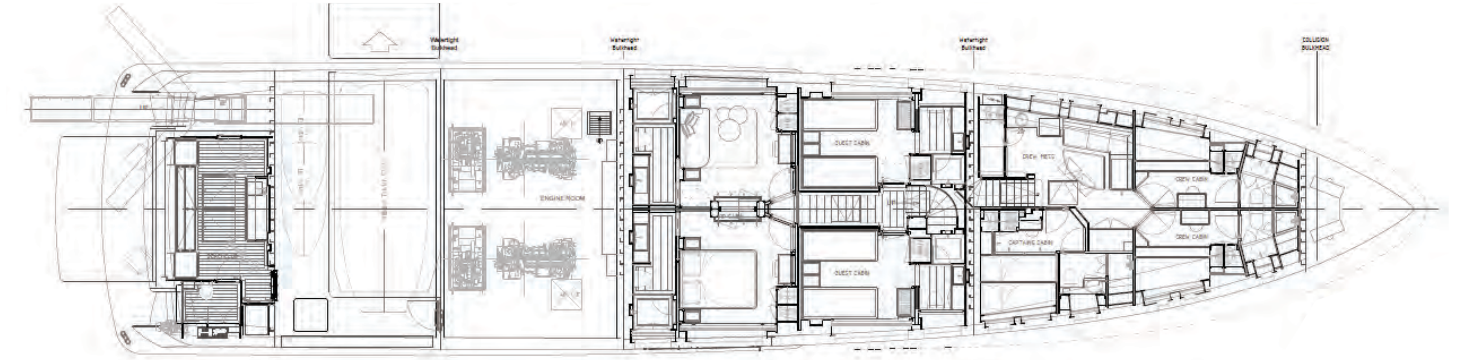
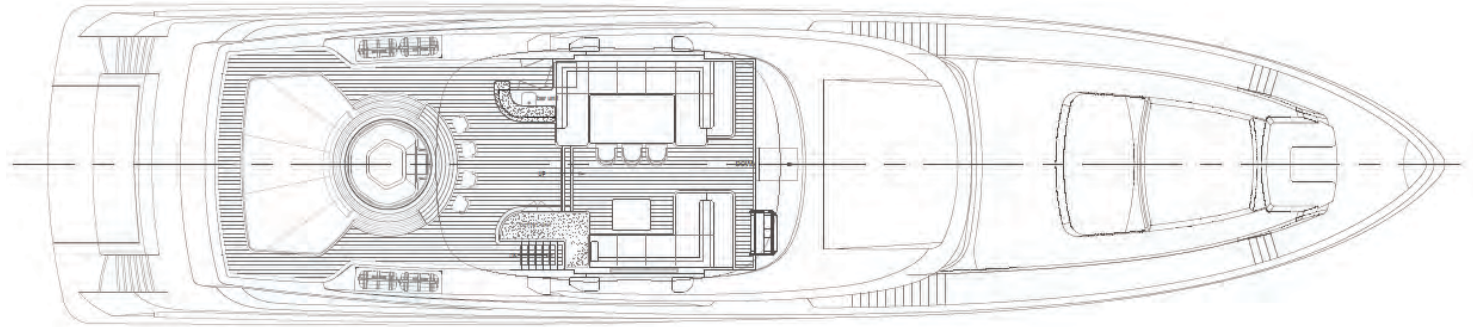
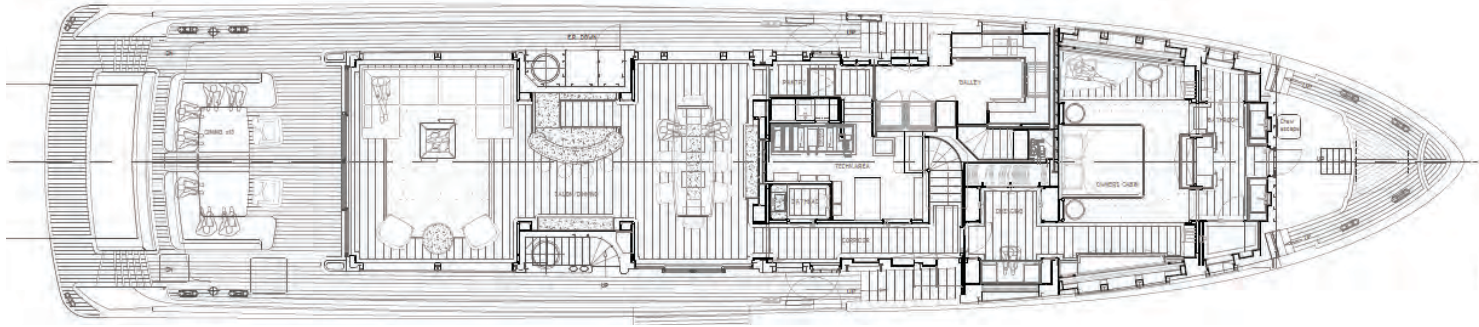
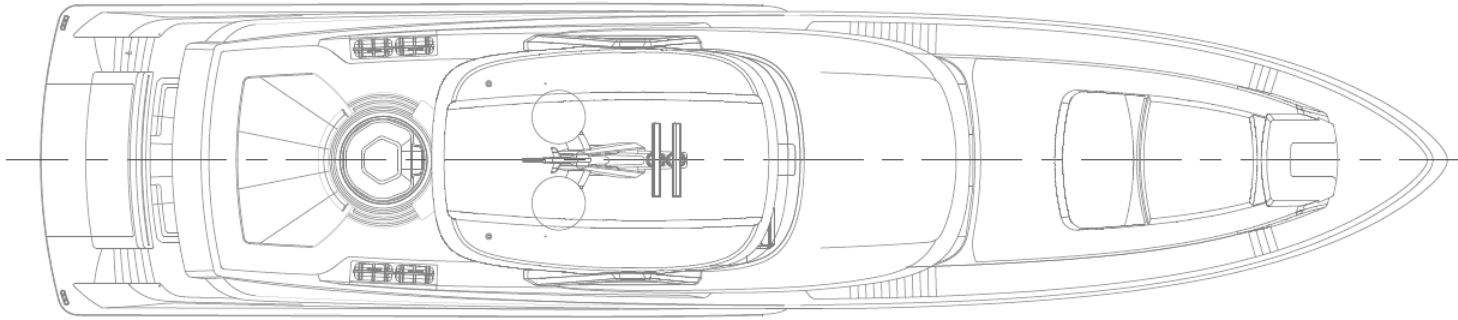
LUXURY
Yacht
GROUP



LUXURY
Yacht
GROUP



LUXURY
Yacht
GROUP
LAYOUT





DISCOVER LUXURY

LUXURY *Yacht* GROUP

Luxury Yacht Group LLC

Sales • Charter • Management • Crew

+1 954 525 9959

www.luxyachts.com

101 SE 14th Street, Fort Lauderdale, FL 33316, USA

USA • Spain • France • New Zealand

Disclaimer

This is provided for informational purposes only and is not intended to be a binding offer or contract. All details are presented in good faith, but Luxury Yacht Group LLC makes no warranties or representations regarding the accuracy, completeness, or usefulness of the information and images contained herein. Yacht inventory, availability, specifications, features, locations, crew, charter prices and other details are subject to change without notice. Reproduction of any text or images found herein is prohibited without written consent from Luxury Yacht Group LLC. © Luxury Yacht Group 2024.